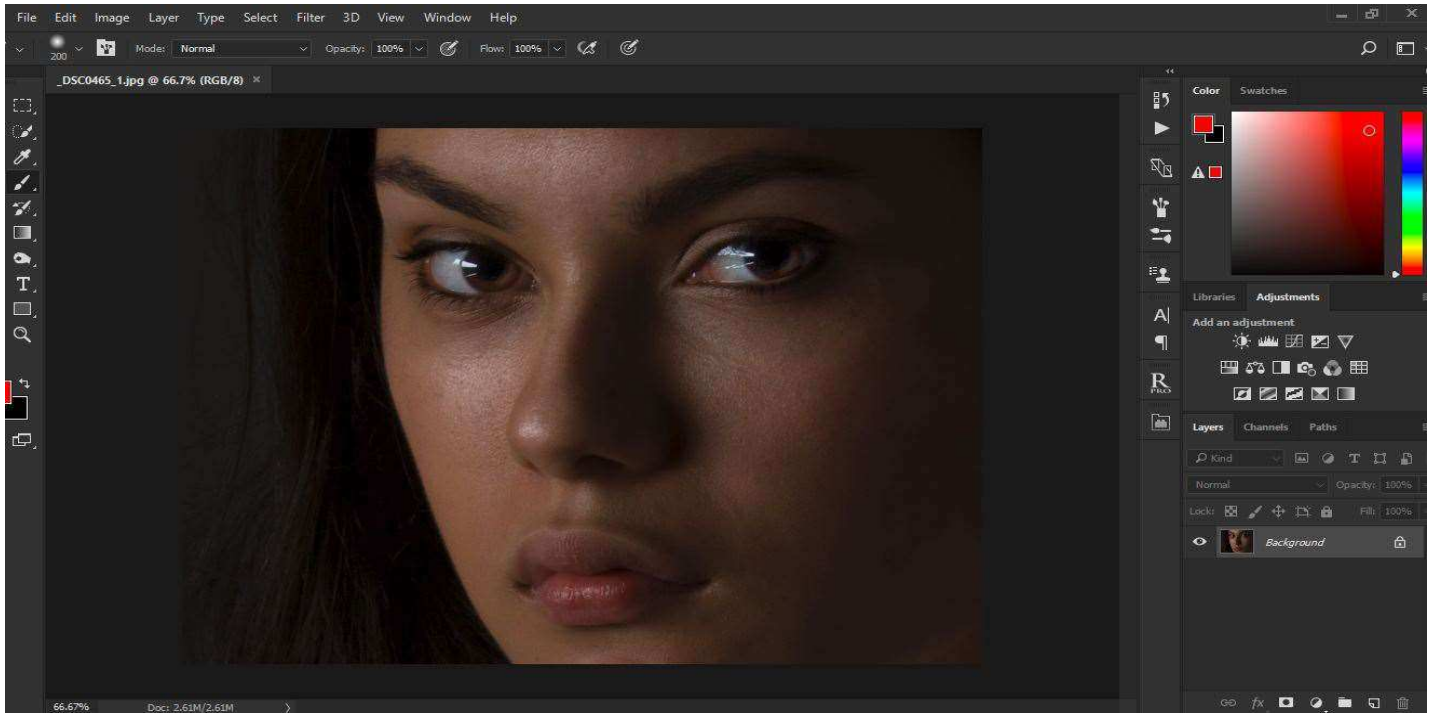
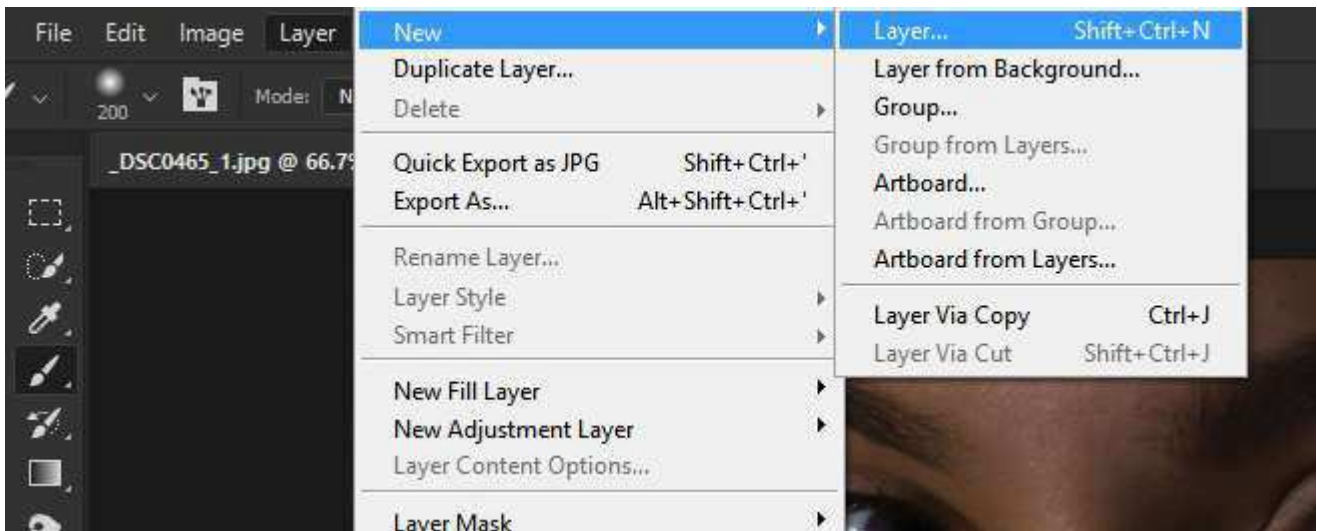


Non destructive editing – Dodge & Burn (Photoshop CC) – J.Good 17/03/17

open the picture to edit – model safia pixie in this case



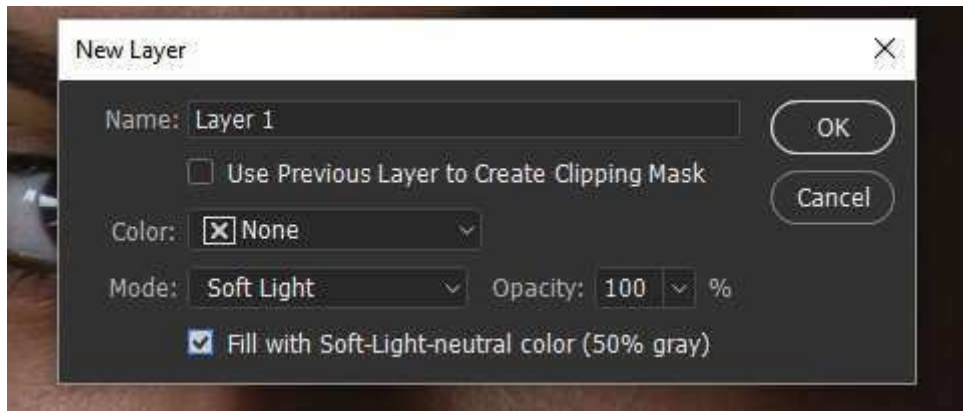
go to file – new – layer



from the 'Mode' selections, select 'soft light'

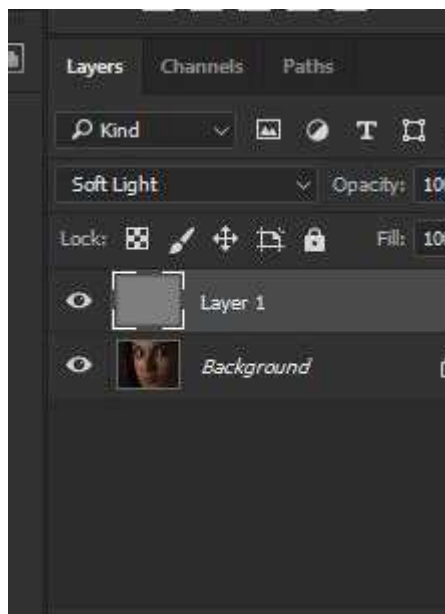
you should then get another option

'Fill with soft- light – neutral colour 50% grey'

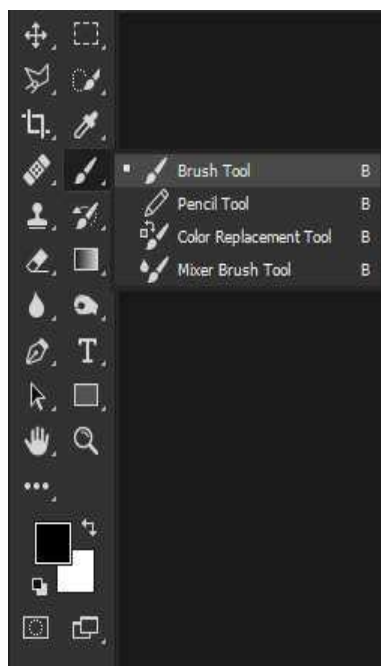


tick this box & click OK.

You'll get a nice new layer filled with grey- as you'd expect as that's just what you asked for.

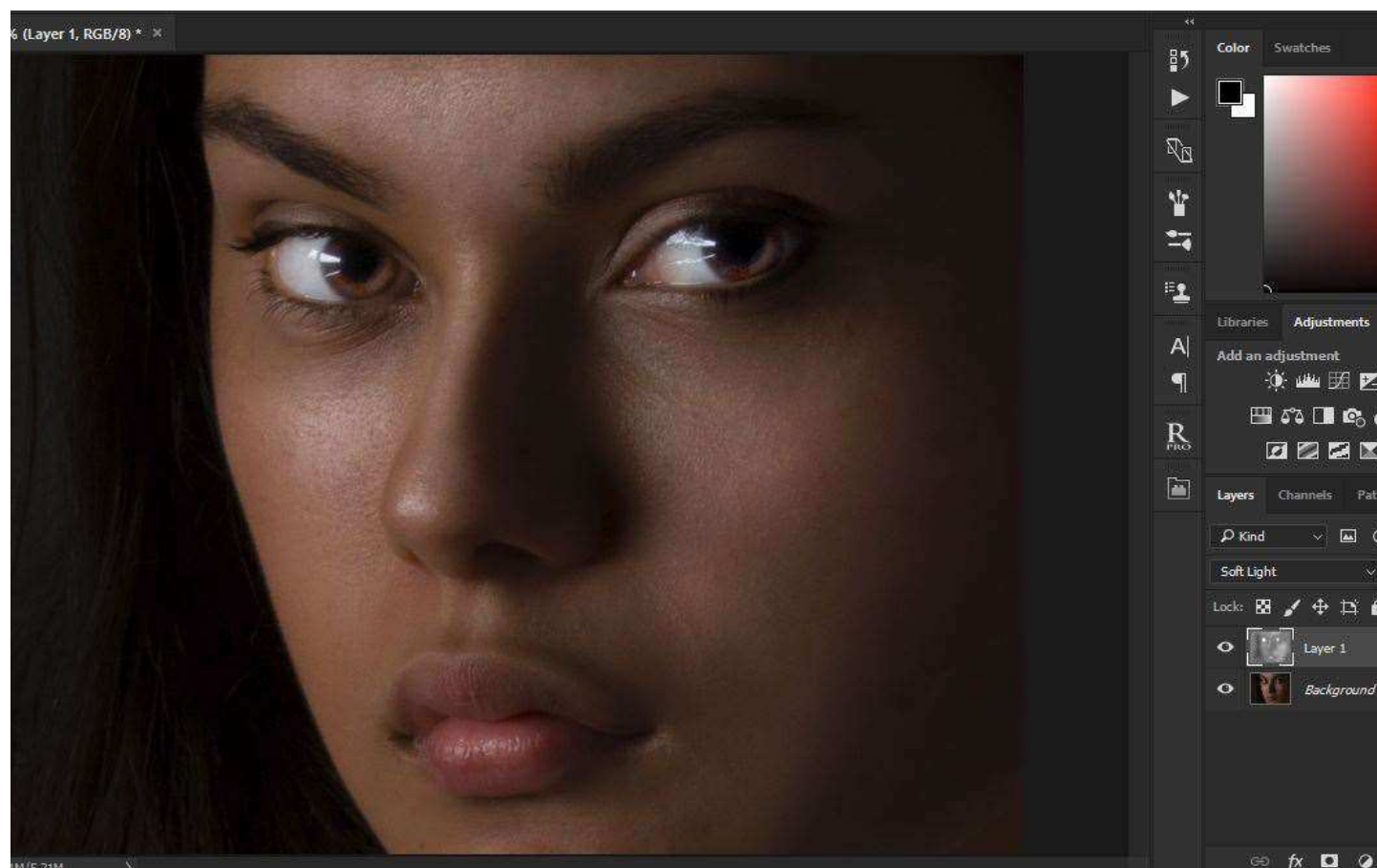


You can now select a normal brush, by clicking the paintbrush tool



you can now just paint on this layer with either black or white to add non destructive hilights. Or shadows. If you mess things up or don't like the effects, you can deselect the layer and delete and start again, and you haven't destroyed any of your original image. Simply re-do all the previous steps until you're happy.

Below you can see my efforts.



And below you can see what i've done on the dodge and burn layer (all non destructive)

